

ATURE EDO STATE.

ational Lease Conference, Benin-City, Edo State, 21st November, 2019.





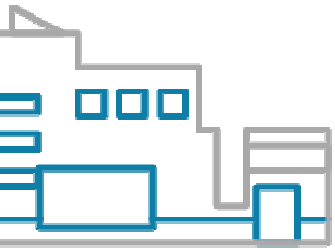
KEY MESSAGES

- Edo State is Open for Business
- Vast Investment Opportunities Abound in the State
- For Accelerated Investments and Development We Need to Change Mindset and Embrace New Ideas and Innovations
- The State is Ready to Partner with Investors.
- We will Continue to Work Towards Improving the Ease of Doing Business.



INVESTMENT PRIORITIES.

Industrial zone



Autopark



Benin Enterprise park



ENTERPRISE PARK



Master Plan





AGRICULTURE: EDO STATE OIL PALM INITIATIVE

STIMULATES LOCAL ECONOMIES



Palm oil creates jobs:
1 worker per 8ha

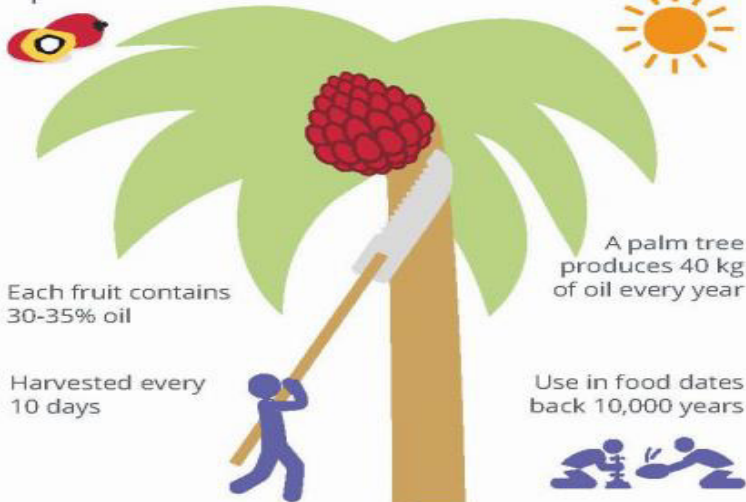
Indonesia & Malaysia
provide
85%
of the world
production

THE PALM OIL STORY

THE MOST WIDELY USED VEGETABLE OIL IN THE WORLD

From the fruits of
a palm oil tree

From a tropical climate



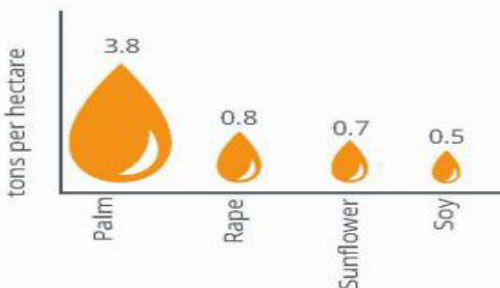
Each fruit contains
30-35% oil

A palm tree
produces 40 kg
of oil every year

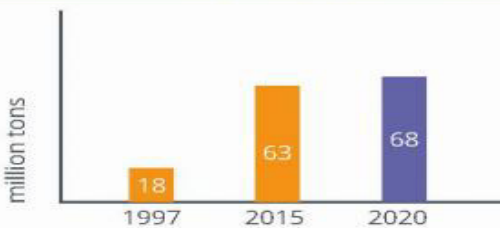
Harvested every
10 days

Use in food dates
back 10,000 years

A HIGHLY EFFICIENT CROP




GROWING GLOBAL DEMAND



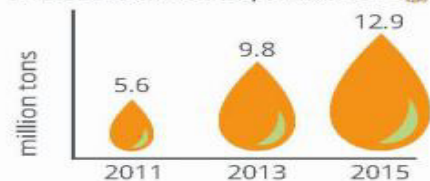
European
Palm Oil Alliance
subseeded & first-based


SUSTAINABLE PRODUCTION

 No cultivation in primary forests
Low pesticides usage

 Education for
boys and girls

Annual sustainable production 



 Environmental and social
responsibility for future
generations

A VERSATILE INGREDIENT



Neutral taste &
smell



Smooth
creamy
texture



Crispness &
crunch



Long shelf
life



Excellent cooking
properties



Excellent
mouth feel

BALANCED FAT COMPOSITION



IMPORTANCE OF FAT IN THE DIET

We need fat every day



Daily intake recommended by WHO

- fat-soluble vitamins
- hormones
- building block cells



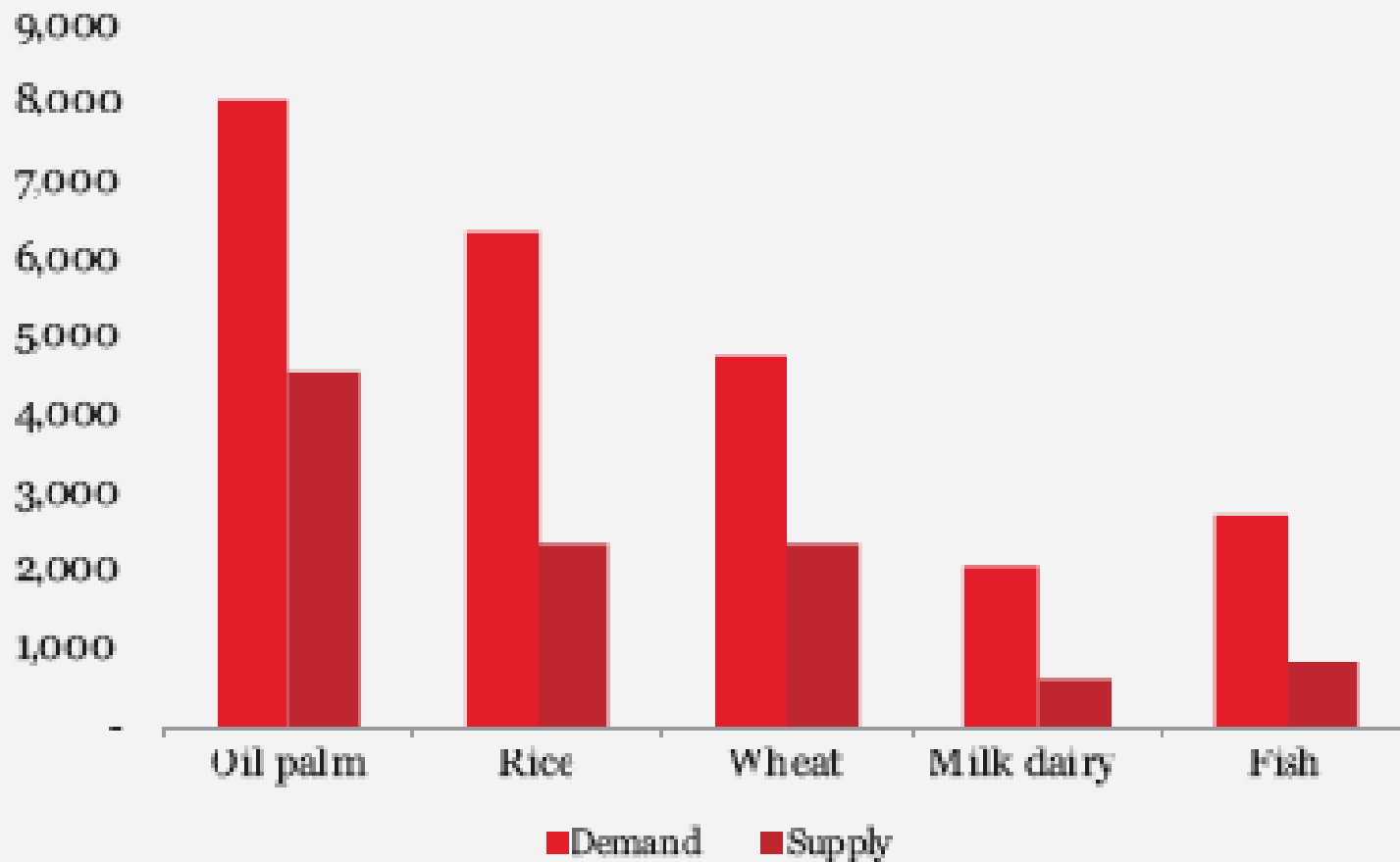
- energy
- insulation



© EPOA Rights reserved - 2016

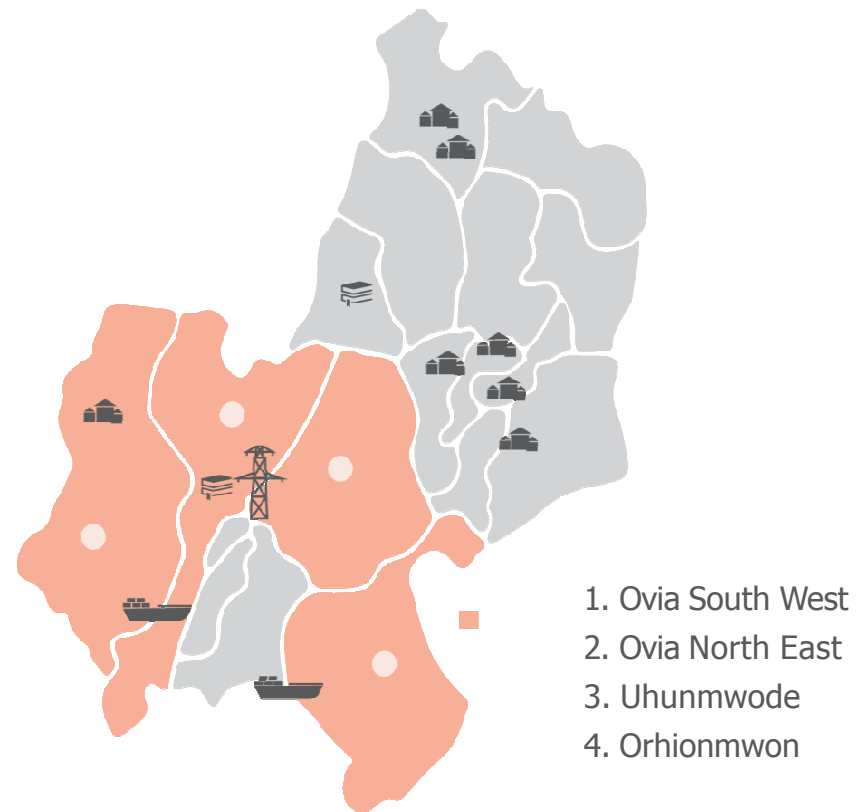
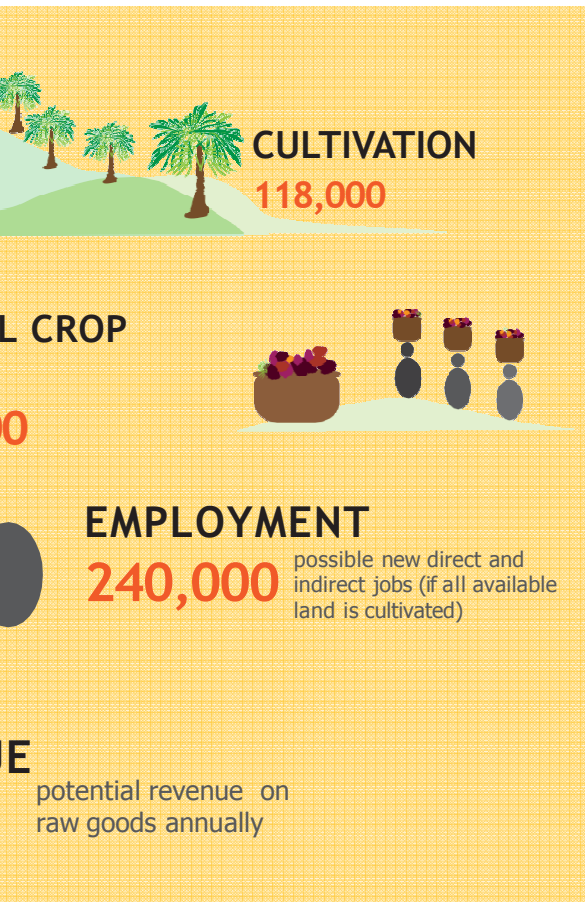


Demand-Supply gap for key agricultural products (2016 estimate)



Source: *The Agriculture Promotion Policy (2016 -2020)*

Edo State Oil Palm Initiative



- Two (2) best performing stocks on the Nigerian Stock Exchange - Okomu and Presco - are both oil palm plantation companies with operations in Edo State.
 - Combined Market Cap of over 300 million USD
 - Combined 45,000 hectares cultivated
- 30,000 hectares in total are currently cultivated for Oil Palm in Edo State

TRANSPORTATION



GOVERNMENT HOUSING INITIATIVE



Emotan Gardens Estate is a 1,440 units housing project being developed as a Government led PPP initiative by Mixta Real Estate Plc., through its housing arm Development and Property Agency (EDPA).

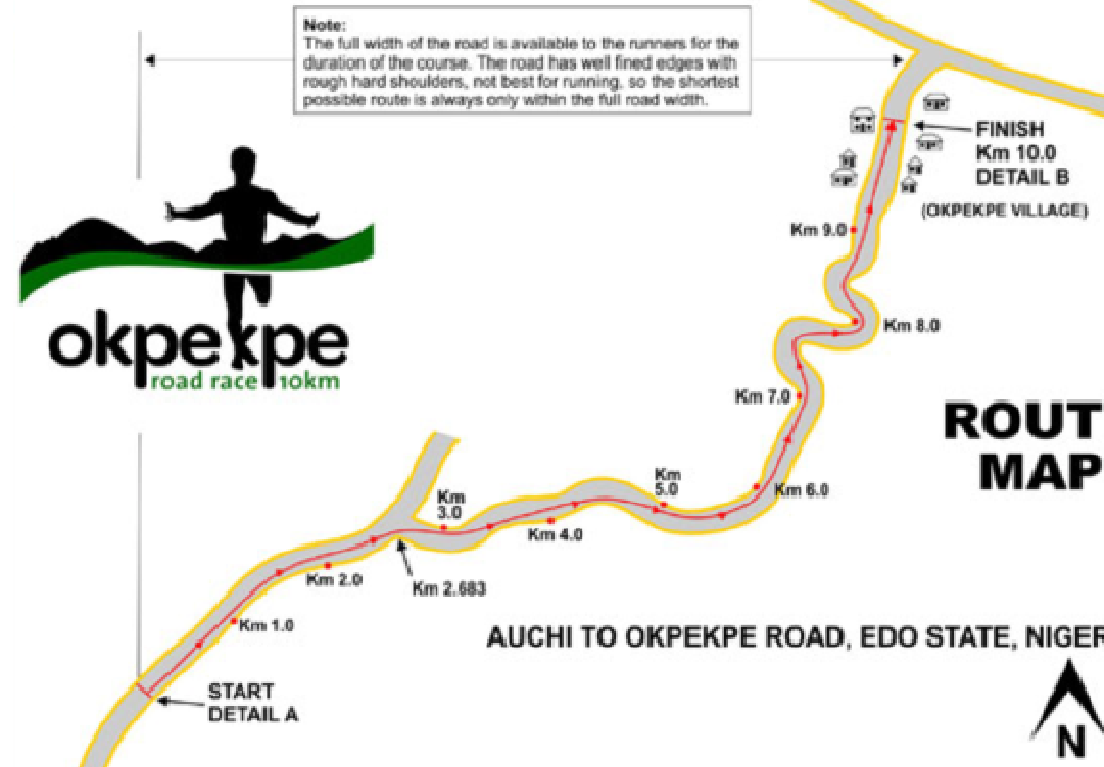
Located at Upper Sokponba Road, it is the first housing project by the Edo State Government for 17 years, scheduled to be completed in 2020. The first 100 units was delivered to home owners in December, 2018.

Key Features:

- 2, 3 and 4 bedroom properties, along with small residential and commercial plots.
- Gated and secure estate.
- Full complementary infrastructure, including paved roads, drainage system, water supply and power.
- Other facilities including worship centres, school, hospital, shops and recreational facilities.

Starting From ₦5 M

CULTURE AND TOURISM



CULTURE AND TOURISM



ENTERTAINMENT INDUSTRY: FILM /MOVIE PRODUCTION VALUE CHAIN



Film/Movie Production

•Above the Line

Producers
Directors
Cinematographers
Light designer
Set designers
Costume designer
Script writers
Editors
Production manager
Director of photography
Script supervisor
Visual effect editor
Marketing
Music director
Music composer
Cinema; projector operators
Make up
Special

Film/Movie Production

•Below the line

Production assistant
Stage hands / Property managers
Gaffer
Welfare / catering services
Marketing Team
Fashion designing
Cinema ticket sales person
Location managers
Beauty & Hair stylist
Song w

REQUIREMENTS.

POWER



Azura-Edo is a 461 MW Independent Power Plant operating in Edo State, Nigeria



REQUIREMENTS



INSTITUTIONS



“We instituted the necessary legislative and regulatory framework as a foundation to encourage investment, innovation & economic growth, and reduce corruption and inefficiency”

SKILLED WORKFORCE



“We are investing heavily in our education system, especially in Vocational, Technical and Agricultural schools and colleges to develop human capital.”

INFRASTRUCTURE



“We are continuously investing to provide the best and most effective Power, Communication, and Transportation infrastructure.”

FINANCE



“We are also working with financial institutions to improve access to long-term financing at affordable rates for MSMEs, especially in the extractive and agricultural sector”



FINAL WORDS.

The Little Actions You Make Will Be The Massive Positive Change We See In The Future. When You Complain, Think Solution When You Think The Solution, Do Execution.

You Can Make It Happen. Act Now - Kelvin Uwaibi

Thank you for your attention!



ESIPO
EDO STATE
INVESTMENT
PROMOTION
OFFICE

WE.ARE.DIFFERENT

09077772180



invest@edostate.gov.ng



Government House, 1 Dennis Osadebe
Avenue, G.R.A, Benin city, Edo State.



invest.edostate.gov.ng

